

Primers

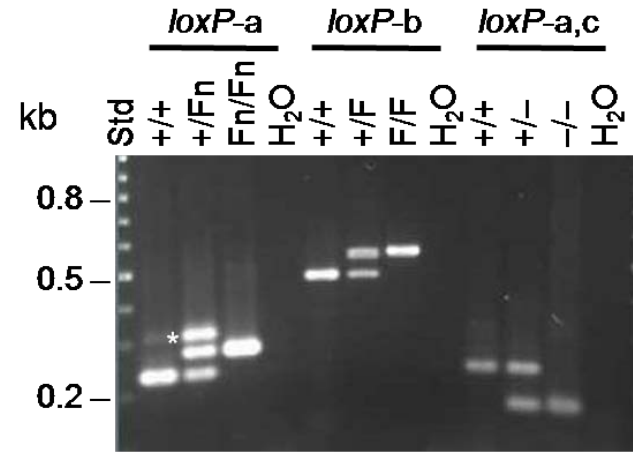
loxP-a: F, 5' -atctctgtggcagcaaaggc and R, 5' -aagcccattcatggctggga

loxP-b: F, 5' -gagcgaacacggcccaag and R, 5' -gcagcctacagctaccatc

loxP-c site was amplified using primers loxP-a-F loxP-b-R

PCR Program

- 95° C 3min
 - 95° C 30sec
 - 64° C 30sec
 - 72° C 40sec
 - 72° C 3min
 - 4° C pause
- 30 cycles



LoxP-a	LoxP-b	LoxP-c
WT: 230bp FN: 260bp *heteroduplex	WT: 472bp F allele: 510	WT: 230bp Null: 170bp